

Product Overview

SIMPLE

SECURE

SEQUENCED

SCHEDULED

COMPLETELY BROWSER-BASED

"We have found eXPorter a great tool that we can use rather than relying on IT, this has enabled us to produce our own reports quicker, and become more proactive rather than reactive in analysing our information".

Avi Kar, Senior Accountant - Johnsons Apparelmaster

Contents

	Page
1. Introduction	3.
2. The Data Dictionary and how it helps	4.
3. Designing Export Processes (EPs)	6.
4. Complex Reporting Using Linked Processes (LP)	8.
5. Sharing and Deployment	10.
6. Contact Us	10.

Introduction

The provision of timely, accurate information is crucial to competitiveness and success in any organisation.

In a fast moving business environment critical business decisions must be made daily. The provision of real time information is fundamental to correct decisions being made and therefore the success of the organisation.

The key to the solution is to enable users to access critical information in real time in a simple but secure fashion, and in a format which they understand and can use. eXant eXPorter provides a simple yet comprehensive solution to this challenge.

eXant eXPorter is an application designed to exploit the user's knowledge of Excel and the powerful facilities of the Microsoft desktop application set. It is designed for ease of use and requires just an internet browser in order to access the application.

A user can design reports sitting anywhere in the world using eXPorter via the web. Its browser-based intuitive and rich interface allows authorised users to create their own data extraction processes from any ODBC compliant database; then export data to various file formats like Microsoft Excel®, Microsoft Access®, HTML, XML, Delimited Text and CSV Files.

A single server based deployment means it is easy to maintain and share Reports and Information.

The method of defining the Export Process is **Simple** and requires a skill level comparable to that needed by a user who has a simple understanding of Microsoft Excel®. It eliminates any need to understand the underlying data structures/tables and so puts the process of defining the Exports into the hands of the Excel end-user.

The unique eXPorter Dictionary allows the **Securing** of data, restricting access to corporate sensitive information at field level. It also allows database tables and fields to be renamed, thereby providing a more simple and meaningful interface for the end user. Join relationships between tables in a dictionary can be pre-defined and stored at dictionary level. Users do not need to understand the join relationship between different tables. They need simply to add tables without worrying about defining the relationship between the tables.

Any number of data extracts can be **Sequenced** in a single export process, along with Microsoft Office Macros or PC applications. This enables comprehensive decision making applications to be built and executed by a single click.

eXPorter also provides an in-built **Scheduler**, allowing complex reporting applications to be run during off peak processing.

Simple, Secure, Sequenced and Scheduled; the key benefits of eXant eXPorter - a Comprehensive Business Intelligence Management Reporting tool.

The Data Dictionary and how it helps

There are always concerns regarding empowering end users with a powerful data extraction tool such as eXporter. The two main concerns are “How do I give my users an understanding of the database?” and “How do I prevent users from accessing corporate sensitive information to which they have no rights of access?”

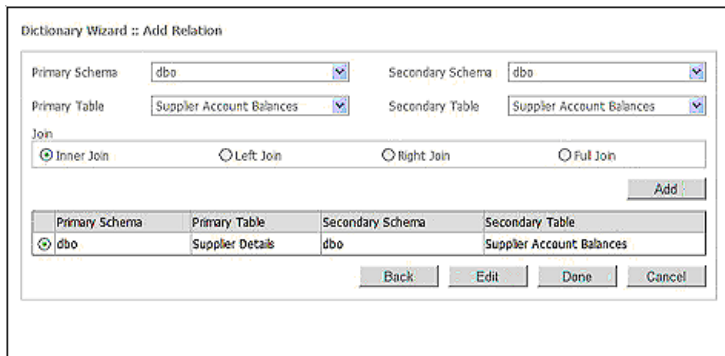
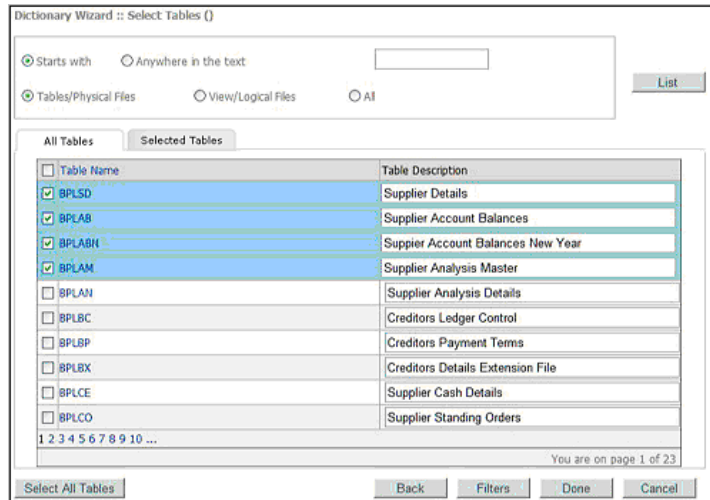
eXporter provides a unique dictionary interface between the end user and the corporate database which both simplifies and secures access to corporate data.

The most important security feature, which forms a fundamental part of the eXporter application, is the **eXporter Dictionary**.

eXporter is targeted at the end user who understands Microsoft Excel® but may have little or no knowledge of the underlying database structure. **The eXporter Dictionary** provides a simple, secure interface between the end user and the corporate database.

Created by the eXporter administrator using the provided Wizards, the **eXporter dictionary** allows the administrator to create a tailored, understandable view of the corporate database.

Table names and field names can be changed, removing technical jargon and making them easier to understand. Fields can be excluded from the dictionary to eliminate confusion or prevent users accessing corporate sensitive information. Filters can be applied to fields within the dictionary which restrict the information extracted from the corporate database by field.

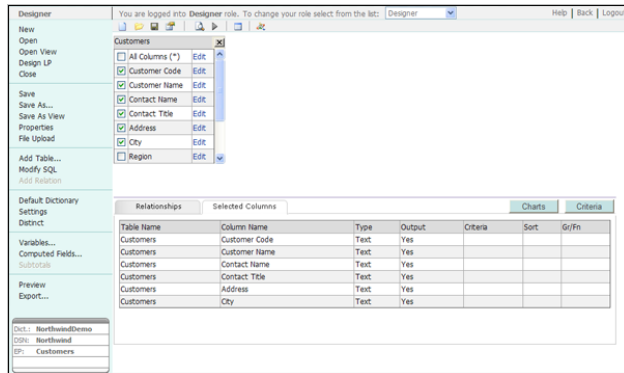


Features

- ❖ Data dictionaries are created using simple-to-use wizards allowing for speedy and accurate dictionary creation.
- ❖ Tables and fields can be renamed, eliminating technical jargon.
- ❖ Data views based on one or more tables with underlying relationships can be created and stored within the Application.
- ❖ Filters contained within the dictionary limit the data retrieved by data value.
- ❖ eXPorter can operate with multiple authorised dictionary views of the database. Users see only that data to which they are authorised by means of Column and Row Based security. Tables and Columns not meant to be accessible to users can be excluded from the dictionary. In addition, filters can be set on one or more columns or tables, so that only the permissible data is allowed to be accessed by users.
- ❖ All data access from the application database is done from a single point on the server.
- ❖ Responsiveness is always a concern when allowing users access to corporate data. eXPorter overcomes this by providing a comprehensive in-built scheduler. Data exports can be scheduled to run during off peak periods, thereby ensuring that long running and complex data extraction processes do not impact the overall load on the production server.

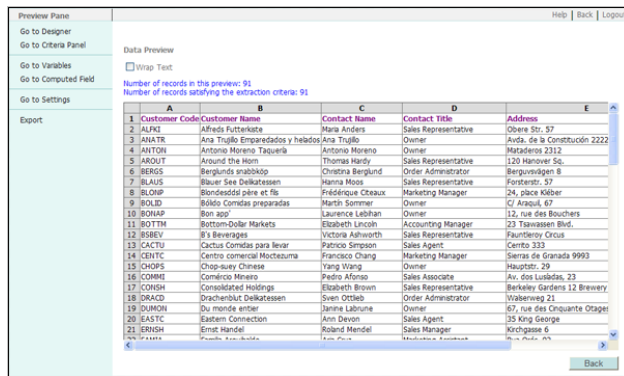
Designing Export Processes (EPs)

For the end user it has never been easier to get data from the corporate database into Microsoft Excel[®] using **eXPorter Export Processes (EPs)**.



Starting from the eXPorter dictionary, the user simply clicks on the table from which the data is to be extracted.

Having selected the table the user then clicks on the fields required to be extracted and finally clicks the Export icon. A new Excel workbook is created and the extracted data written to a worksheet.



It really is that simple to get corporate data into Microsoft Excel[®].

Additionally, eXPorter has many features that allow the data to be manipulated prior to extraction.

Selection criteria can be applied to any of the fields in the table in order to extract only the data which is required.

Selection criteria can be stored as fixed values within the **EP**, or the user can be prompted to enter the value at the time of execution.

eXPorter also provides the ability to sort and summarise the data prior to extraction.

New fields can be created using the computed field function (for example gross margin, period variance, etc. which are not available as stored values in the database). Selection criteria can even be applied to new fields allowing data to be extracted where, for example, the gross margin is less than 20% or the period balance is greater than the budget.

Users can preview the data prior to the actual extraction of data to the target file format (Microsoft Excel[®], Microsoft Access[®], HTML, XML etc.). The number of data records displayed in the preview panel can be restricted by the user, which will save both time and capacity.

Having defined the **EP** it can be saved for future execution or distribution throughout an organization.

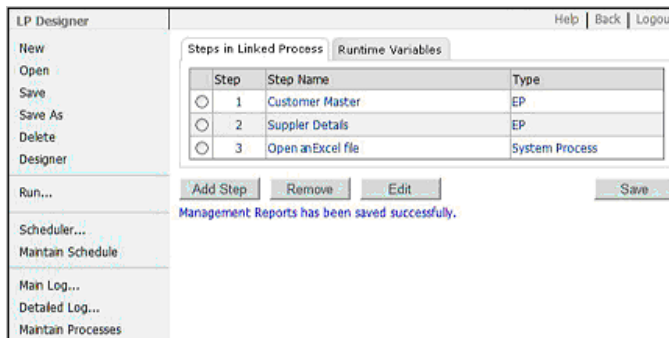
Features

- ❖ Three clicks are all that is required to get corporate data into Microsoft Excel[®]. The eXPorter Dictionary view of the corporate database enables a User to identify and select the tables and columns from which data needs to be extracted.
- ❖ Since eXPorter is a completely browser based solution, all designer functions require the user to have only an Internet browser installed.
- ❖ Comprehensive selection criteria ensure that only relevant data is exported.
- ❖ Users see only that data to which they are authorised ensuring total security for the corporate data.
- ❖ Sorting and data summarisation can be performed prior to exporting the data to Microsoft Excel[®] (or any supported target file format like Microsoft Excel[®], Microsoft Access[®], HTML, XML etc.).
- ❖ eXPorter provides a one way export process only. The retrieving of data from the corporate database is the only facility provided, eliminating any unintentional update of corporate data.
- ❖ Users can change the name of the column headers before exporting data to Microsoft Excel[®].
- ❖ Extraction Processes, once created, can be easily allocated to multiple users within the organisation.

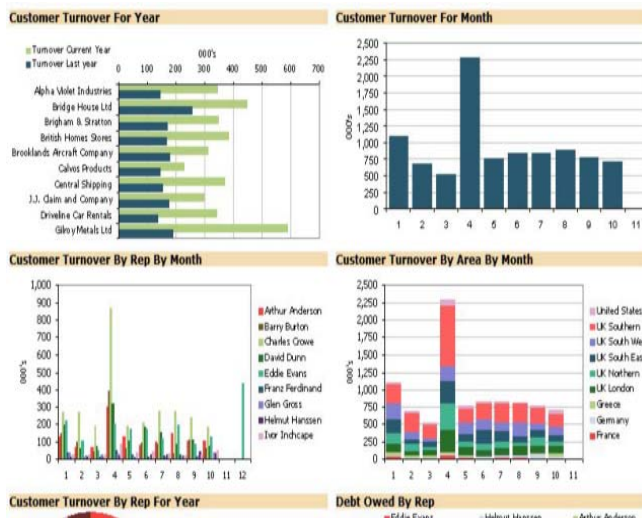
Complex Reporting using Linked Processes (LPs)

eXPorter is more than a simple data extraction tool. Using a feature of eXPorter called "Linked Processes", eXPorter can create complex and comprehensive reports.

A Linked Process (**LP**) is made up of a number of steps. Each step will typically be either an Extraction Process (**EP**) or some "special function" designed to carry out an alternative specific task. Alternative specific tasks might for example be, at the most complex, a process whereby a spreadsheet is zipped and emailed, or as simple as opening/display of an Excel spreadsheet.



A simple workflow engine allows the completion of each step (within the **LP**) to be monitored. Suitable exception handling is carried out should there be either a problem caused by an unexpected error or a change in the logic flow determined by the return code at a particular step.



An **LP** can extract data from multiple data sources residing on multiple data servers to a single Excel spreadsheet, in order to perform consolidated reporting.

Combined with the **LP's** ability to run Excel macros the extracted data can be sorted or summarised, or formatted to create graphs. Using the special functions made available to an **LP Designer**, the summarised information can then be distributed to any desired recipients via e-mail.

Comprehensive reporting applications can take advantage of the in-built eXPorter scheduler. **LPs** can be scheduled to run during off peak periods, thereby ensuring that long running and complex data extraction routines do not impact the smooth running of the production server.

Features

- ❖ Data may be combined from any number of sources into a single management report.
- ❖ Excel macros may be executed to summarise and format the extracted data.
- ❖ Server based scheduled workflow control ensures that Scheduled **LPs** may be run during off-peak periods.
- ❖ The grouping and totalling of data can be achieved either by means of a function in eXPorter or by utilising the sub-totals features of Microsoft Excel®.
- ❖ Complex management information and Key Performance Indicators (KPI's) can be executed as one definable process (**LP**).
- ❖ There are many formats which can be specified as the output of an EP/LP such as Microsoft Excel®, Microsoft Access®, HTML, XML, Delimited Text and CSV Files.
- ❖ Data can be output to preformatted Microsoft Excel® templates taking advantage of the powerful presentation tools, pivot tables etc. as provided by the Microsoft Office® products
- ❖ Output report files can be emailed as attachments to any defined set of recipients as part of the **LP**.
- ❖ The power of messaging (SMS) may be utilised using mobile phone technology to distribute alert messages using rules defined in **LPs**.

Sharing and Deployment

The comprehensive administration functions built into eXPorter allow **EPs**, **LPs** and dictionaries to be shared and deployed quickly and easily throughout an organisation.

The definitions of dictionaries, **EPs** and **LPs** are stored in one place, on the application server.

Once an **EP** or an **LP** has been created, the administrator can determine if it is to be shared with other users.

The nominated eXPorter Administrator controls the access and deployment of all **EP** and **LP** definitions by user name.

Each major event (login, logout, creation/modification/deleting of **EPs/LPs/Dictionaries**) and any error generated in the system is logged with all possible details and can be viewed using a separate application interface. This interface allows the filtering and sorting of the logged data. This detailed event and error logging mechanism minimises down time and facilitates quick problem diagnosis and audit.

Features

- ❖ Quick and easy to deploy and maintain.
- ❖ LAN, WAN and Web deployable.
- ❖ Utilising server-based technology data is extracted and stored centrally on the application server. Server-based technology also ensures that the connection to the corporate data is made centrally from the application server machine.
- ❖ Event and error logging provides sophisticated error diagnosis

Contact Us

For more information about eXPorter or any of our products and services please contact:

BvW Global Pty Ltd

310 George Street
GPO Box 311
Sydney NSW 2001

Australia

Tel: +61 (02) 8011-3670

Email: info@bvwglobal.com